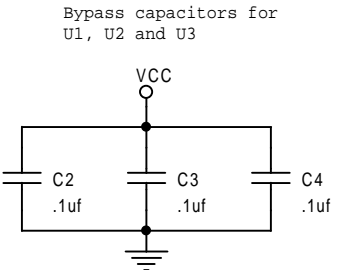


Write enable is available on the cartridge port in case someone wants to build a programmer which accepts a cartridge directly. When this board is inserted in a genesis, 5 volts goes to the pin (inactive)



1:2 = 8 Megabit
2:3 = 4 Megabit, High/low toggled by reset

<http://www.raphnet.net>

Title		
8 Megabit cart, H/L 4 Megabit toggable		
Size	Document Number	Rev
A		A
Date:	Wednesday, March 30, 2005	Sheet 1 of 1